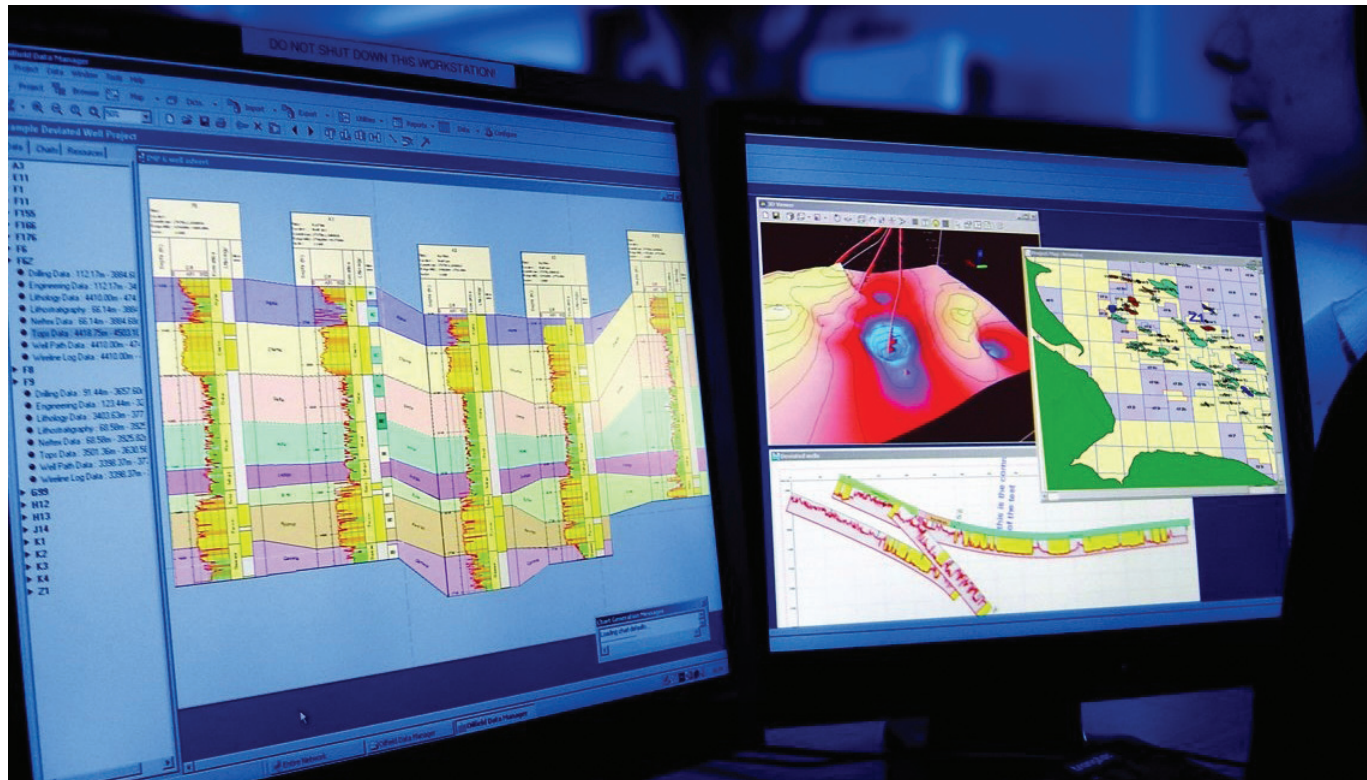


# Fundamentals of Oilfield Data Manager (ODM3™)



## Aims

ODM3™ allows the geoscientist to quickly and easily incorporate and visualise numerous forms of data with the objective of using all available information to make an informed interpretation of the sub-surface geology. The result is more efficient working, better data QC and higher quality presentations.

This unique, Senergy-developed course provides both experienced users and novices with enhanced skills in ODM3. The understanding gained will enable the user to make full use of the software. The course covers all the major functionality of the system using real-world examples and industry-based exercises. At the end, the user will have covered all major aspects of the ODM3 Basic Module and in a position to work confidently in the system.

## Benefits

Course participants will learn all major functionality in the ODM3 Basic Module, including:

- data load, export, QC and management
- creating and editing wellsticks
- interpreting data
- mapping, bubble maps and GIS
- making correlations, montages and presentations
- autobuilding digital wellbooks

## Who should attend

Anyone who uses or wants to use ODM3. While aimed at beginners, the course will also benefit those who have experience of ODM3 but wish to broaden their practical knowledge of the software. Typical target audiences for the ODM3 Fundamentals are geologists and data managers.

**Duration** - 3 days

### Course instructor

This course will be presented by Senergy instructors either from the ODM3 team itself, or selected Senergy geologists with experience in ODM3.

### Course description and modules

The course will be conducted using a combination of lectures and hands-on use of the software. The conventional course synopsis can be fine-tuned to meet the needs of a particular audience.

### Database set up and administration

- setup new users
- build new projects
- create new data tables/types
- delete project data/projects

### Data import and export

- external databases
- wireline log data
- single/multi ASCII files

### Building wellsticks

- new charts and basic wellsticks
- data panel options
- adding data – tops, zones and logs
- editing display properties
- templates, quick charts

### Building correlations

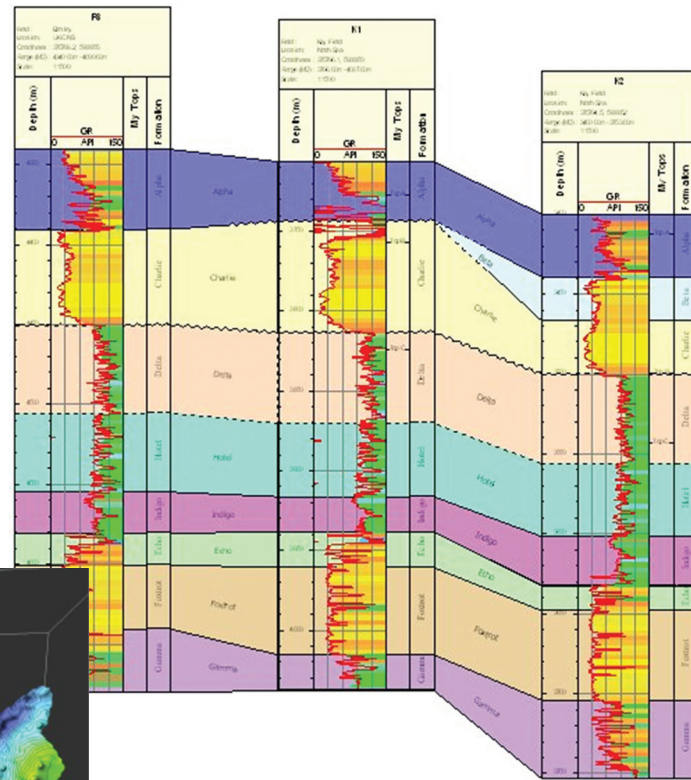
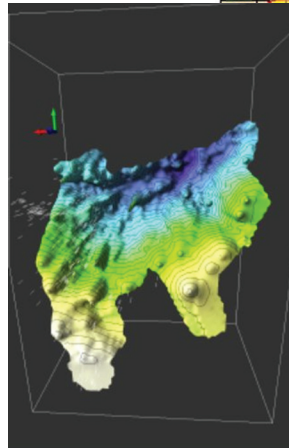
- simple correlations
- automated correlation
- manual correlation – ties and pinchouts
- editing ties, adding faults

### Building projections

- creating deviated wellpath projections
- adding data/surfaces

### Database administration

- text dictionaries
- graphic dictionaries
- importing/exporting dictionaries
- managing wireline logs



### Data interrogation

- viewing tabular/wireline data
- report tools

### Creating maps and objects

- properties and map manager
- creating well queries
- GIS data display
- building polygons
- building grids

### Utilities

- log maintenance
- data editing
- picks, intervals, curves conversions

### 3D Viewer

- introduction to the 3D viewer
- display grids and well paths in 2D and 3D

### Contact

[www.senergyworld.com/training](http://www.senergyworld.com/training)

E: [training@senergyworld.com](mailto:training@senergyworld.com)

T: +44 131 523 1000