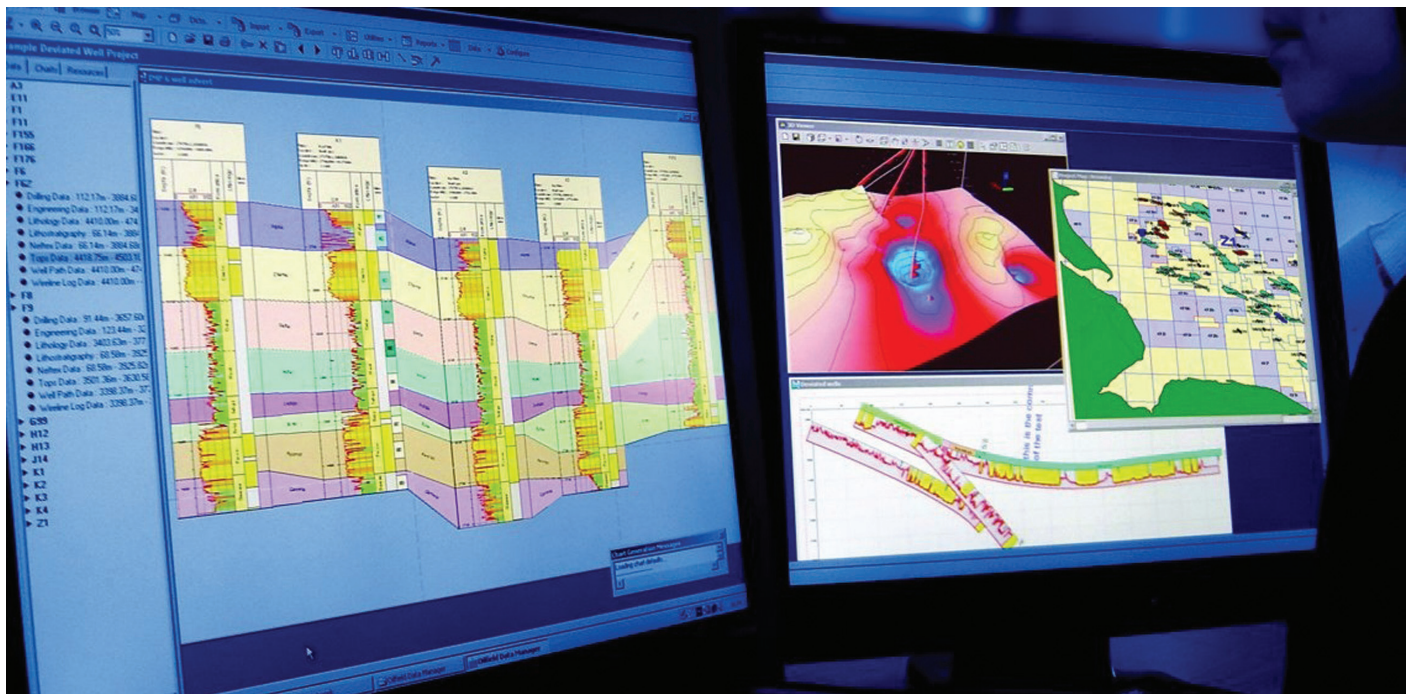


# Advanced Oilfield Data Manager ODM3™



## Aims

ODM3™ allows the geoscientist to quickly and easily incorporate and visualise numerous forms of data with the objective of using all available information to make an informed interpretation of the sub-surface geology. The result is more efficient working, better data QC and higher quality presentations.

This unique, Senergy-developed course provides users with some experience in ODM3™ the opportunity to enhance their practical skills in the software. Attendees can expect to be hands-on for the most part of the course, working through examples in a purpose-built ODM3™ database.

## Benefits

The course introduces more advanced functionality, including numerous new features aimed at the geologist. It also acts as a good refresher course, as the teaching approach highlights the importance of effective data management.

By the end of the course the user should be equipped to enhance their use of ODM3™ in their daily workflow, taking advantage of new techniques such as correlating in chronostratigraphic age, true stratigraphic thickness and two-way-time.

Instructors will encourage discussion and aim to address the needs of each participant, many of whom will have experience of using ODM3™ in different ways. For this reason, the course schedule is flexible and can be geared towards the particular needs of a client.

## Who should attend

Anyone with some experience in using ODM3 or who has previously attended a Fundamentals of ODM3 training course. The course introduces more advanced functionality not covered in the basic training course and will broaden the user's practical knowledge of the software. Typical target audience for the advanced course is geologists.

**Duration** - 2 days

## Course description and modules

A typical 2-day advanced ODM3™ training course will cover:

### ODM3 refresher

- Manage an ODM3 database (basic house-keeping skills)
- Manage database users, project properties and well header information
- Utilise the Database Manager effectively

### Interpreter model

- Implement ODM3's new interpreter model, where each data entry is stored under an interpreter name and any changes to data are recorded against a username.

### Specialist well panels

- Utilise some of ODM3's more specialist data display methods, including: composite data types (structural logs and stacked curve logs), core images, sequence stratigraphy, graphic qualifiers, hyperlinks etc.

### Applied use of Charts

- Make the most of chart montages
- Automatically reproduce an existing chart for any number of wells using the Apply Well Tool.
- Advanced correlation techniques (e.g. correlating on oil, gas and water columns and on drill stems).

### Stratigraphic scheme designer

- Create and implement time-based chronostratigraphic schemes
- Auto-build tops, lithology and age data as you interpret using stratigraphic schemes

### Alternate plot dimensions

- Plot wellsticks in chronostratigraphic age and correlate to produce wheeler diagrams
- Manage checkshots and plot in two-way-time (TWT)
- Plot in true stratigraphic thickness (TST)

### Crossplots

- Produce crossplots for sample data and log data, including worked examples based on geochemical data.
- Advanced crossplots features, including filters and classifiers and drawing lines and shapes.

### Managing Log Curves

- Utilise the log curve management tools and manage log curve in Sets
- Make the most the Log Script utility, with some basic petrophysical examples

### Managing core data

- Implement the new core data functionality to apply consistent depth shifts to core-related data types.

### Applied use of Maps

- Interrogate well data from maps using bubbles and queries
- Use of the 3D viewer to visualise and QC well data
- Attach wellsticks to a map on a chart

---

[www.senergyworld.com/training](http://www.senergyworld.com/training)

---

E: [training@senergyworld.com](mailto:training@senergyworld.com)

T: +44 131 523 1000