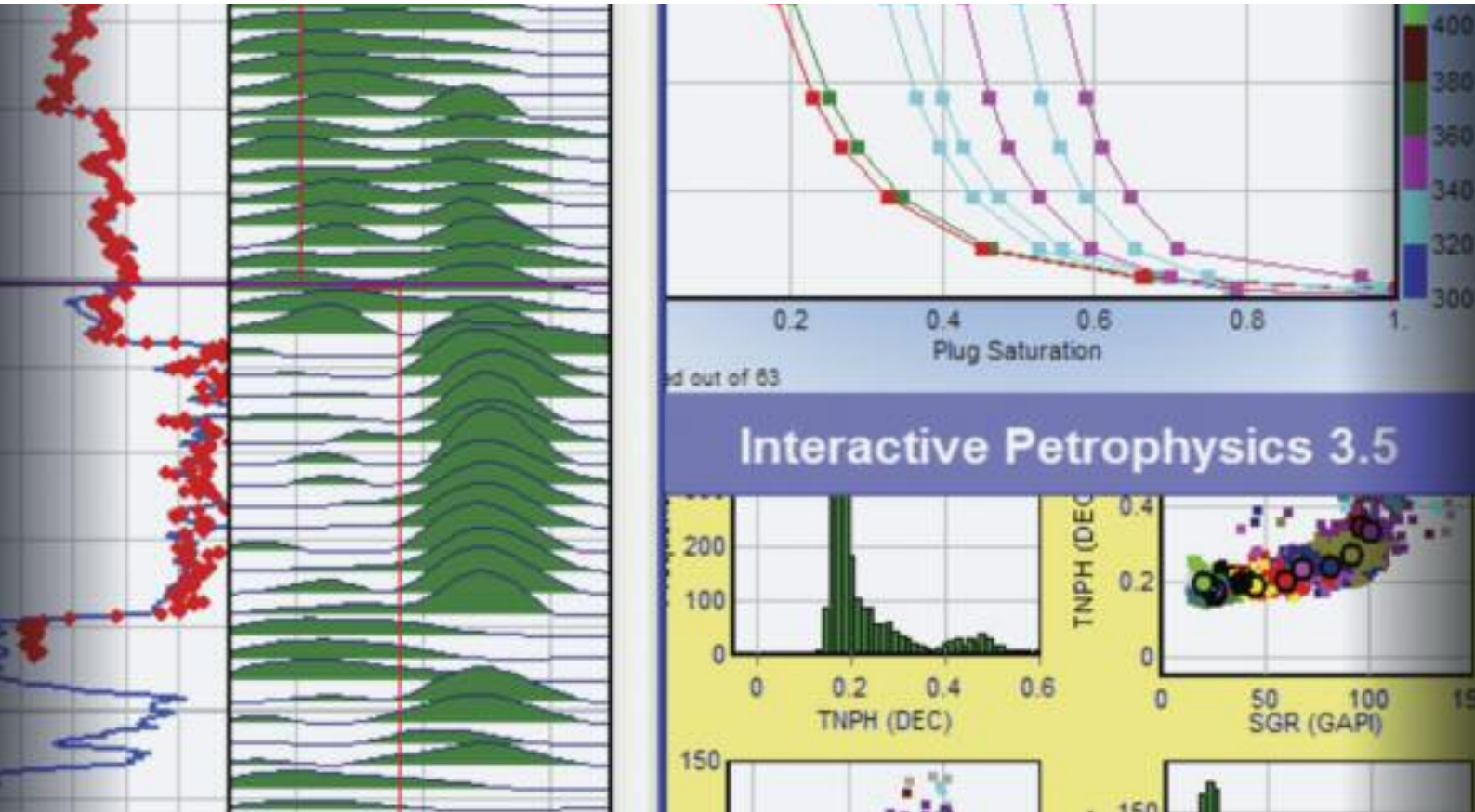




IP courses

# Fundamentals of Interactive Petrophysics 3.5

Developed by petrophysicists, for petrophysicists.



This unique, Senergy-developed course provides both experienced users and novices with enhanced skills in IP. The deeper understanding gained will enable them to make full use of software.

## Aims

Interactive Petrophysics 3.5 was developed by a petrophysicist, with a view to work as petrophysicists want to work, but never thought possible! The software is different by design - portable, quick and versatile. It is an easy-to-use log analysis tool, ideal for both geologists and petrophysicists. Geologists may wish to quality check of their log data and experienced petrophysicists can carry out multi-zone, multi-well petrophysical field analyses.

This unique, Senergy-developed course provides both experienced users and novices with enhanced skills in IP. The deeper understanding gained will enable them to make full use of software.



### Benefits

On completion, course students will:

- be familiar with IP users interface and data structure
- understand the ethos behind IP
- know how to get data in/out of IP
- be able to present data graphically
- be familiar with short cuts, alternative approaches and hidden features
- understand how the editing tools work
- be able to perform calculations
- understand how the basic interpretation modules and approaches work
- appreciate the petrophysical concepts used in IP
- be able to run through a basic petrophysical interpretation
- know how to report the parameters and results.
- understand the multiwell and batching tools

### Who should attend?

Anyone who uses or wants to use IP.

While aimed at beginners, the course will also benefit those who have experience of IP but wish to broaden their practical knowledge of the software.

Anyone who requires using log, core or drilling data in their job.

### Duration

3 days

### Course Instructors

This course will be presented by Senergy's principal petrophysicists who not only have supported the development of the software and are expert users and mentors, but are highly-experienced practising petrophysicists. Senergy's petrophysical team bring over 350 years of experience on complex petrophysical issues obtained in diverse geological and geographical areas, on both conventional and unconventional reservoirs.

This unique, Senergy-developed course provides both experienced users and novices with enhanced skills in IP



Frank Whitehead - Interactive Petrophysics Development Manager

### Course description and modules

The course will be conducted using a combination of lectures and hands-on use of the software.

The style of the training is to include an introduction to petrophysics concepts and techniques along with the subsequent application in IP. The conventional course synopsis can be fine-tuned to meet the needs of a particular audience:

### Introduction to IP

#### Data management

- database file structure
- database navigation
- well navigation
- creating new wells
- loading data from external files
- exporting data to external files well information
- curve headers, types and sets
- deleting wells and curves
- copying wells and curves
- defaults
- curve history
- user help
- licensing

#### Presentation

- log plots
- zones and formation tops
- crossplotting
- multi-curve crossplots
- histograms
- multi-well log plot
- work areas
- well map
- montage
- curve statistics

#### Data types

- array curves
- core data
- picture curves
- text curves
- lithology / facies logs

#### Editing tools

- curve listing
- curve edit
- baseline shift
- depth shifting
- splicing curves
- curve filtering, averaging and rescale
- normalisation
- curve interpolation

#### Calculations

- temperature curves
- Rw from SP
- TVD
- pressure gradient analysis
- curve integration
- trend / square curves
- regression
- environmental corrections
- basic log analysis functions
- user formula
- multi line formulas

#### Petrophysical interpretation

- interpretation parameter sets
- basic interpretation
- clay volume determination
- porosity and water saturation
- cut-offs and summation reports
- parameter reporting

#### Multi-well Interpretation

- well sets
- multi-well curve headers and aliasing
- multi-well batch
- multi-well parameter distribution
- multi-well cut-offs and summations
- multi-well change parameter
- multi-well interactive crossplots and histograms
- view parameters in 3D

